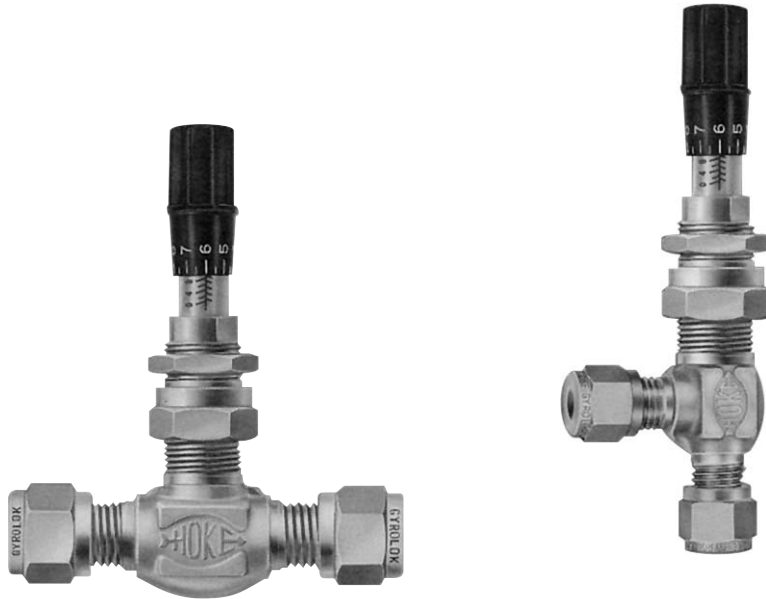




# Milli-Mite® 1300 Series

Forged Metering Valves



## Typical Applications

- Fine metering in medical and biochemical gas or vapor analysis
- Sampling and analyzing water and air pollution
- Chromatographs, mass spectrometers and other instruments where fine metering is required

## Technical Data

<b>BODY*</b>	316 stainless steel, brass
<b>MAXIMUM OPERATING PRESSURE @ 70° F (21° C)</b>	Brass <ul style="list-style-type: none"><li>• 3000 psig (207 bar)</li></ul> 316 stainless steel <ul style="list-style-type: none"><li>• 5000 psig (345 bar)</li></ul>
<b>OPERATING TEMPERATURE RANGE</b>	Brass <ul style="list-style-type: none"><li>-65 to 400° F (-54° to 204° C)</li></ul> 316 stainless steel <ul style="list-style-type: none"><li>-65° to 450° F (-54° to 232° C)</li></ul>
<b>ORIFICE</b>	.047" (1.19 mm)
<b>CV FACTOR</b>	1° stem = .010 Cv 3° stem = .024 Cv

\* Consult factory for other materials

## Features & Benefits

- Metering accuracy - 18 turn displacement of stem provides unparalleled performance and repeatability
- 1° and 3° stems provide a wide flow range with ultra fine metering control
- Panel mounting is standard for all valves
- Precision orifice and close thread tolerances minimize hysteresis
- Micrometer vernier handle provides visual control and repeatable stem settings
- Dyna-Pak® wafer packing below the stem threads provides leak tight service

metering valves

## HOKE Incorporated

405 Centura Court • PO Box 4866 • Spartanburg, SC 29303

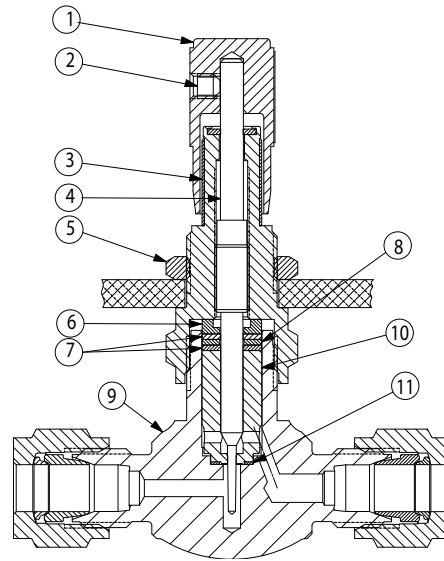
Phone (864) 574-7966 Fax (864) 587-5608

www.hoke.com • sales@hoke.com

# Milli-Mite® 1300 Series

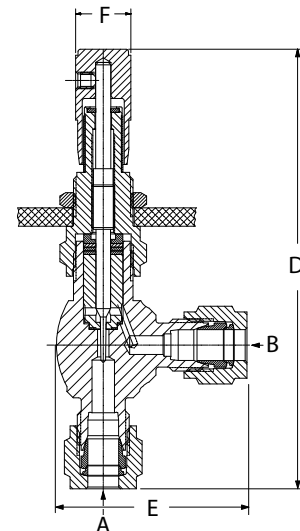
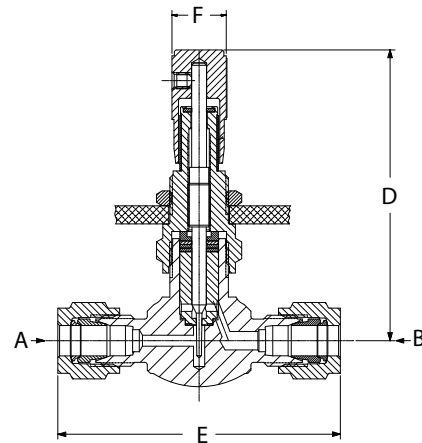
## Materials of Construction

	DESCRIPTION	MATERIAL
1	Handle, black anodized	Aluminum Alloy
2	Set Screw	Alloy Steel
3	Graduated sleeve	302 SS
4	Metering Stem	316 stainless
5	Panel nut	Brass
6	Upper spacer	316 stainless
7	Dyna-Pak® wafer	Teflon®
8	Lower spacer	316 stainless
9	Body	316 stainless or brass
10	Integrated seat & spacer	316 stainless
11	Orifice seal	Teflon®



## Dimensions

FLOW PATTERN	CONNECTIONS		DIMENSIONS		
	A INLET	B OUTLET	D	E	F
GLOBE	1/8" NPT Female	1/8" NPT Female	2.83" 72mm	1.75" 44mm	.50" 13mm
	1/8" NPT Male	1/8" NPT Male	3.25" 83mm	1.75" 44mm	
	1/8" NPT Male	1/8" Gyrolok®	3.25" 83mm	2.13" 54mm	
	1/4" NPT Male	1/4" NPT Male	3.25" 83mm	1.75" 44mm	
	1/8" Gyrolok®	1/8" Gyrolok®	3.25" 83mm	2.38" 60mm	
	1/4" Gyrolok®	1/4" Gyrolok®	3.25" 83mm	2.38" 60mm	
	3mm Gyrolok®	3mm Gyrolok®	3.25" 83mm	2.38" 60mm	
	6mm Gyrolok®	6mm Gyrolok®	3.25" 83mm	2.38" 60mm	
ANGLE	1/8" NPT Female	1/8" NPT Female	3.75" 95mm	1.28" 33mm	
	1/8" NPT Male	1/8" Gyrolok®	3.75" 95mm	1.28" 33mm	
	1/8" Gyrolok®	1/8" Gyrolok®	4.00" 102mm	1.63" 41mm	
	1/4" Gyrolok®	1/4" Gyrolok®	4.00" 102mm	1.63" 41mm	
	3mm Gyrolok®	3mm Gyrolok®	3.25" 83mm	1.38" 41mm	
	6mm Gyrolok®	6mm Gyrolok®	3.25" 83mm	1.38" 41mm	



Dimensions for reference only, subject to change.

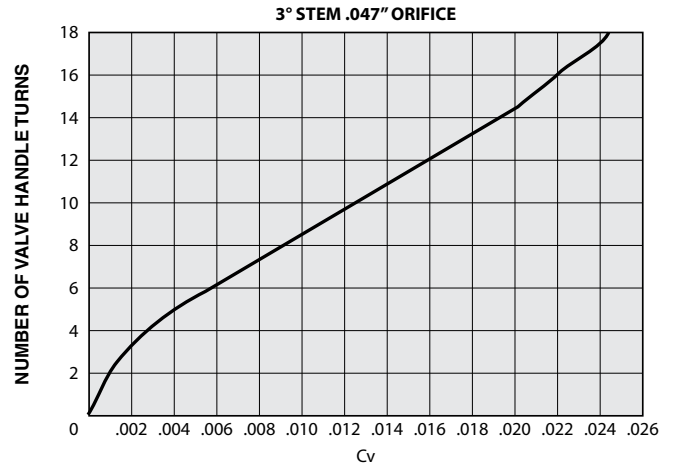
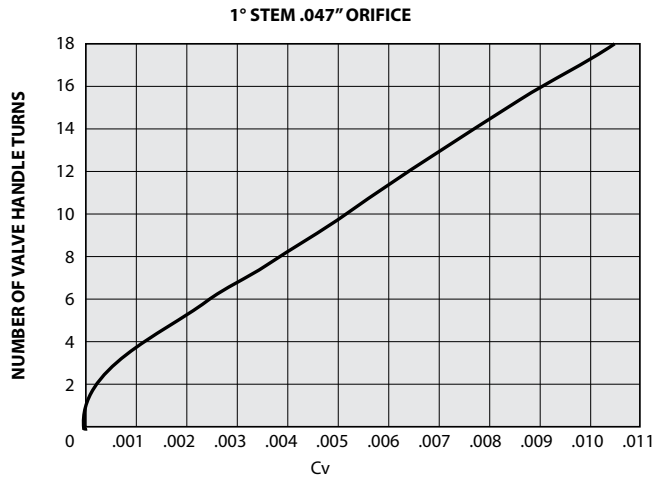
### Panel mounting

Panel hole = .52" (13 mm) diameter

Panel thickness = .16" (4 mm) maximum

# Milli-Mite® 1300 Series

## Reference Flow Curves



## How to Order

FLOW PATTERN	CONNECTIONS		ORDER BY NUMBER			
	A INLET	B OUTLET	316SS VALVES		BRASS VALVES	
			1° STEM	3° STEM	1° STEM	3° STEM
			CV = 0.010	CV = 0.024	CV = 0.010	CV = 0.024
GLOBE	1/8" NPT Female	1/8" NPT Female	—	1315F2Y	—	—
	1/8" NPT Male	1/8" Gyrolok®	—	—	1335H2B	1315H2B
	1/8" NPT Male	1/8" NPT Male	—	—	1335M2B	1315M2B
	1/4" NPT Male	1/4" NPT Male	1335 M4Y	1315M4Y	1335M4B	1315M4B
	1/8" Gyrolok®	1/8" Gyrolok®	1335G2Y	1315G2Y	1335G2B	1315G2B
	1/4" Gyrolok®	1/4" Gyrolok®	1335G4Y	1315G4Y	1335G4B	1315G4B
	3mm Gyrolok®	3mm Gyrolok®	1335G3YMM	1315G3YMM	—	—
6mm Gyrolok®	6mm Gyrolok®	1335G6YMM	1315G6YMM	—	—	
ANGLE	1/8" NPT Female	1/8" NPT Female	—	—	1345F2B	1325F2B
	1/8" NPT Male	1/8" Gyrolok®	1345H2Y	1325H2Y	1345H2B	1325H2B
	1/8" Gyrolok®	1/8" Gyrolok®	1345G2Y	1325G2Y	1345G2B	1325G2B
	1/4" Gyrolok®	1/4" Gyrolok®	1345G4Y	1325G4Y	1345G4B	1325G4B
	3mm Gyrolok®	3mm Gyrolok®	1345G3YMM	1325G3YMM	—	—
	6mm Gyrolok®	6mm Gyrolok®	1345G6YMM	1325G6YMM	1345G6BMM	1325G6BMM
	1/8" NPT Female	1/8" NPT Female	—	—	1345F2B	—

## Ordering Options

### Spare Parts

Spare parts and repair kits are available for all needle valves. Please contact your distributor for specific information.

### Cleaning and Testing

When ordering, please specify if oxygen cleaning or helium leak testing is required.

### Additional Sizes

Additional sizes and options are available on special request. Please consult your local HOKE distributor.