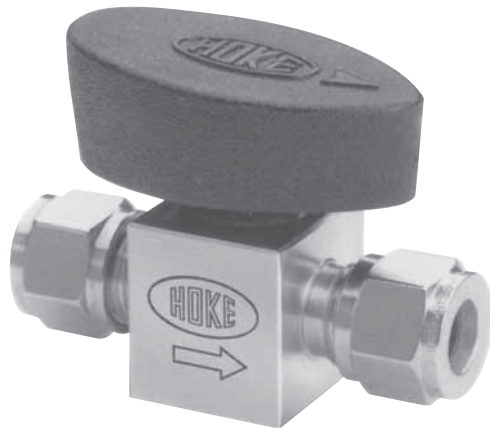




# 7300 Series

Quarter-turn Plug Valves



The Hoke 7300 Series Plug Valve provides full flow or leak-tight shut off with just a quarter turn. The 7300 is recommended for use in applications where instant on-off and visual flow indication is essential. Its safe, reliable top-loaded design allows throttling of fluids and thru-port rodding of the valve. The simple design provides easy maintenance and extends valve life.

## Applications

- Low pressure air lines
- Test benches
- Chromatographs
- Control panels
- Instrument lines for on/off service
- Isolation valves
- Sampling lines
- Pilot plant instrumentation

## Technical Data

<b>MAXIMUM UNIDIRECTIONAL OPERATING PRESSURE</b>	3,000 psig (20.7 MPa) 200 psig with vent
<b>MAXIMUM REVERSE OPERATING PRESSURE</b>	1,000 psig (6.9 MPa)
<b>MAXIMUM OPERATING TEMPERATURE RANGE</b>	-20° to 400° F (-29° C to 205° C) with fluoroelastomer seals
<b>ORIFICE SIZES</b>	0.093 to 0.187 (2 to 5mm)
<b>Cv (MAXIMUM)</b>	0.74

## Benefits

### Safety

- Dual retaining rings prevent accidental plug removal when the handle is not in place

### Full flow

- Straight through orifice

### Ease of maintenance

- Straight through bore allows rodding through body

### Visual indication of flow

- Handle shape indicates flow direction

### Quick actuation

- 90° on/off-instant control

### Multifunctional

- Throttling capabilities

### Safety handle

- Oval trip-proof handle prevents inadvertent actuation

### Ease of repair

- Plug and o-ring are easily replaced

### Reliable

- All valves are factory tested

### Ease of operation

- Low operating torque

### Easy installation

- Available with Gyrolok® flareless tube fittings

plug valves

## HOKE Incorporated

405 Centura Court • PO Box 4866 (29305) • Spartanburg, SC 29303

Phone (864) 574-7966 Fax (864) 587-5608

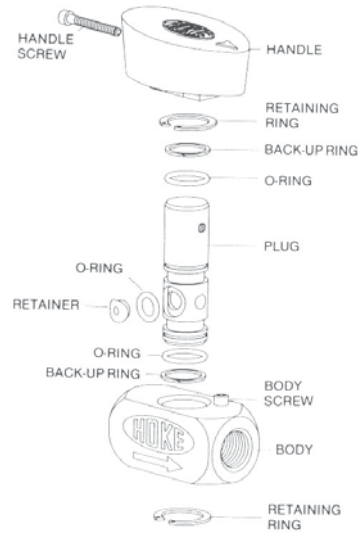
www.hoke.com • sales@hoke.com

# 7300 Series

## Materials of Construction

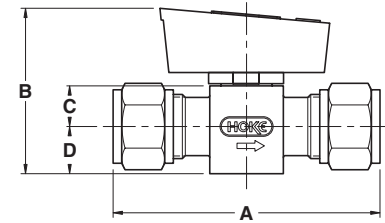
COMPONENT	316 STAINLESS STEEL	BRASS
Body	316 stainless steel	Brass
Plug	316 stainless steel	Brass
Plug coating	Fluoropolymer (black)	Fluoropolymer (green)
Handle	Nylon	Nylon
Retainer	PEEK™	PEEK™
O-rings*	Fluoroelastomer	Fluoroelastomer
Back-up rings	PTFE	PTFE
Retaining ring	Stainless steel	Stainless steel
Body screw	Stainless steel	Stainless steel
Handle screw	Stainless steel	Stainless steel
Lubricant	Fluorocarbon	Fluorocarbon

\* Standard on 7312



## Dimensions (inches)

END CONNECTIONS	PART NUMBER		ORIFICE	Cv	A	B	C	D	BODY WIDTH
	BRASS	316 STAINLESS STEEL							
1/8 female NPT	7312F2B	7312F2Y	0.187	0.74	1.90	2	0.50	0.50	1
1/8 Gyrolok®	7312G2B	7312G2Y	0.093	0.12	2.20	2	0.50	0.50	1
1/4 female NPT	7312F4B	7312F4Y	0.187	0.74	2.10	2	0.50	0.50	1
1/4 Gyrolok®	7312G4B	7312G4Y	0.187	0.74	2.37	2	0.50	0.50	1
3/8 Gyrolok®	7312G6B	7312G6Y	0.187	0.74	2.50	2	0.50	0.50	1
1/2 Gyrolok®	—	7312G8Y	0.187	0.74	3.08	2	0.50	0.50	1



## How to Order

**73 1 2 G4 Y**

<p><b>BODY OPTIONS</b></p> <ul style="list-style-type: none"> <li>1 Standard body</li> <li>7 Down stream vent (see below)</li> </ul>	<p><b>BODY MATERIAL</b></p> <ul style="list-style-type: none"> <li>B Brass</li> <li>Y 316 stainless steel</li> </ul>
<p><b>O-RING MATERIAL</b></p> <ul style="list-style-type: none"> <li>1 Nitrile</li> <li>2 Fluoroelastomer (standard)</li> <li>3 EPR</li> </ul>	<p><b>END CONNECTIONS</b></p> <ul style="list-style-type: none"> <li>F2 1/8 female NPT</li> <li>F4 1/4 female NPT</li> <li>G2 1/8 Gyrolok®</li> <li>G4 1/4 Gyrolok®</li> <li>G6 3/8 Gyrolok®</li> <li>G8 1/2 Gyrolok® (316 stainless steel only)</li> </ul>

### Down Stream Vent

Down stream vent allows down stream pressure to be relieved to atmosphere through a small hole in the body. To order, select '7' under Body Options.

### Repair Kits

- SP7300K1 includes the fluoroelastomer o-rings, retainer, retaining rings, and PTFE back-up rings.
- SP 300K2 includes the brass plug.
- SP7300K3 includes the 316 stainless steel plug.

### Locking Kit

7300K2

### Colored Handles

Colored handles provide a visual identification of valves used in various applications. Refer to the chart below for ordering information:

PART NUMBER	HANDLE COLOR
96159-030	Red
96159-031	Blue
96159-033	Green

## For Your Safety

It is solely the responsibility of the system designer and user to select products suitable for their specific application requirements and to ensure proper installation, operation, and maintenance of these products. Material compatibility, product ratings and application details should be considered in the selection. Improper selection or use of products described herein can cause personal injury or property damage.